

Bowden Grandview School

February 27, 2023

Renaissance Fair

Grade eights had their Renaissance Fair and did an incredible job on their projects! They have been preparing over the past month, and have blown us away with their enthusiasm and the high quality projects and presentations!

What's Happening:

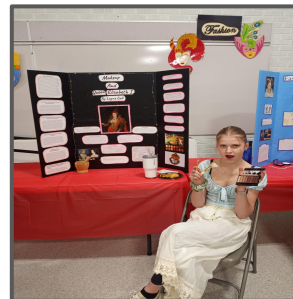
Tuesday, February 28

- School Council Meeting @ 12:00pm



Ready, Set, Go!
Welcome to Kindergarten

Online Kindergarten Registration for the 2023-2024 school year begins on January 9!



CANDY APPLES AND CARMEL CORN

ORDER: FEB. 15 - FEB. 28

DELIVERED: MARCH 17



CANDY APPLES - \$6

CARMEL CORN - \$4

**ORDERS CAN BE PLACED ONLINE OR WITH
MS. SG AND MS. HARVEY.**

Skating

The week before Winter Break, BGS students walked to the arena for some PE on ice. Students participated in skating, shinny, games and some broomball activities. The PE 20/30 class volunteered their class time to help the grade 1 students get to the arena, get their equipment on and assisted them on the ice. It was a successful week of skating for all BGS students and staff! We hope to have a few more days at the arena in early spring, due to the enjoyment of all!

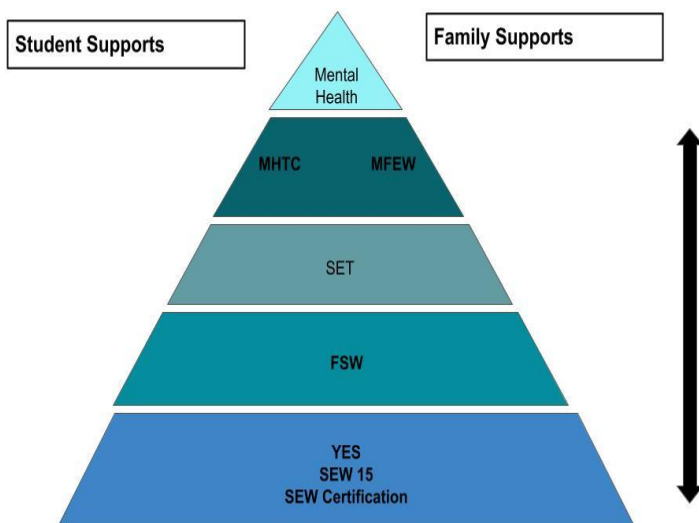


Building Social Emotional Wellness

- A message from Superintendent Kurt Sacher

Various [studies](#) and [multiple observations](#) tell us it is a challenging time for young people and their social-emotional well being. We take this seriously in Chinook's Edge, and we are focused on making a difference in this key area. Why? We know when students are well emotionally, it sets them up for success in every other area of their lives, including learning at school.

The Chinook's Edge approach to this work can be visualized in a pyramid. It is a multi-layered and proactive approach. Our work begins at the bottom of the pyramid with programming that reaches all students. Moving up the pyramid, our work becomes more tailored to individual students who need additional support. A key element of this plan is the inclusion of families.



In summary, starting at the bottom of the pyramid, here is how Chinook's Edge is supporting students:

- YES = **Youth Empowerment & Support** program. Proactive - building social emotional wellness in all K-8 classrooms. Also - targeted groups at lunch, after school and in the summer.
- SEW 15 - **Social Emotional Wellness 15** is a high school course created to build social emotional wellness for students.
- FSW = **Family School Wellness**. FSW workers help students individually and in small groups to support mild to moderate needs. Families are connected to the conversation and strategies to support student's social emotional well-being.
- SET = **Social Emotional Teams** are based in each school. They work with individual students, and potentially their families, to support moderate to severe mental health challenges.
- MHTC / MFEW = **Mental Health Transition Consultant / McMan Enrichment Workers**. MHTC coordinates with SET specialists to provide support to students experiencing severe mental health or emotional challenges. MFEW provides in-home family support.

Of note, Chinook's Edge and its partners received a [\\$1.4 million provincial grant](#) for a two-year mental health pilot. The grant allows us to hire the MHTC and MFEW workers. Also, the Chinook's Edge Board financially supports the YES, FSW and SET teams with close to \$3 million in funding annually. And, at a more granular level, we have amazing staff who are very committed to helping our students. This is very important work.

If you'd like to know more about these programs - and how they work at your child's school, I would encourage you to reach out to your school's principal.

To read the latest version of the Board e-News, please [click here](#).



REGISTRATION IS OPEN

OldsMinorSoccer.ca

Registration closes
April 1

Mon/Wed: U11, U15, U19
Tues/Thurs: U6, U9, U13, U17

Teams will be mixed boys/girls.

U11-U19 will play 8 vs 8

Dates are subject to change pending on number of players and coaches available

Red Deer County



Youth ART CLASSES

These 5 week sessions give youth a foundation in the arts! Bring out your creative side in a fun & inspiring environment.



TIME

3:30 - 4:30 PM



DATES

February 28-
March 28



COST

\$ 10.00



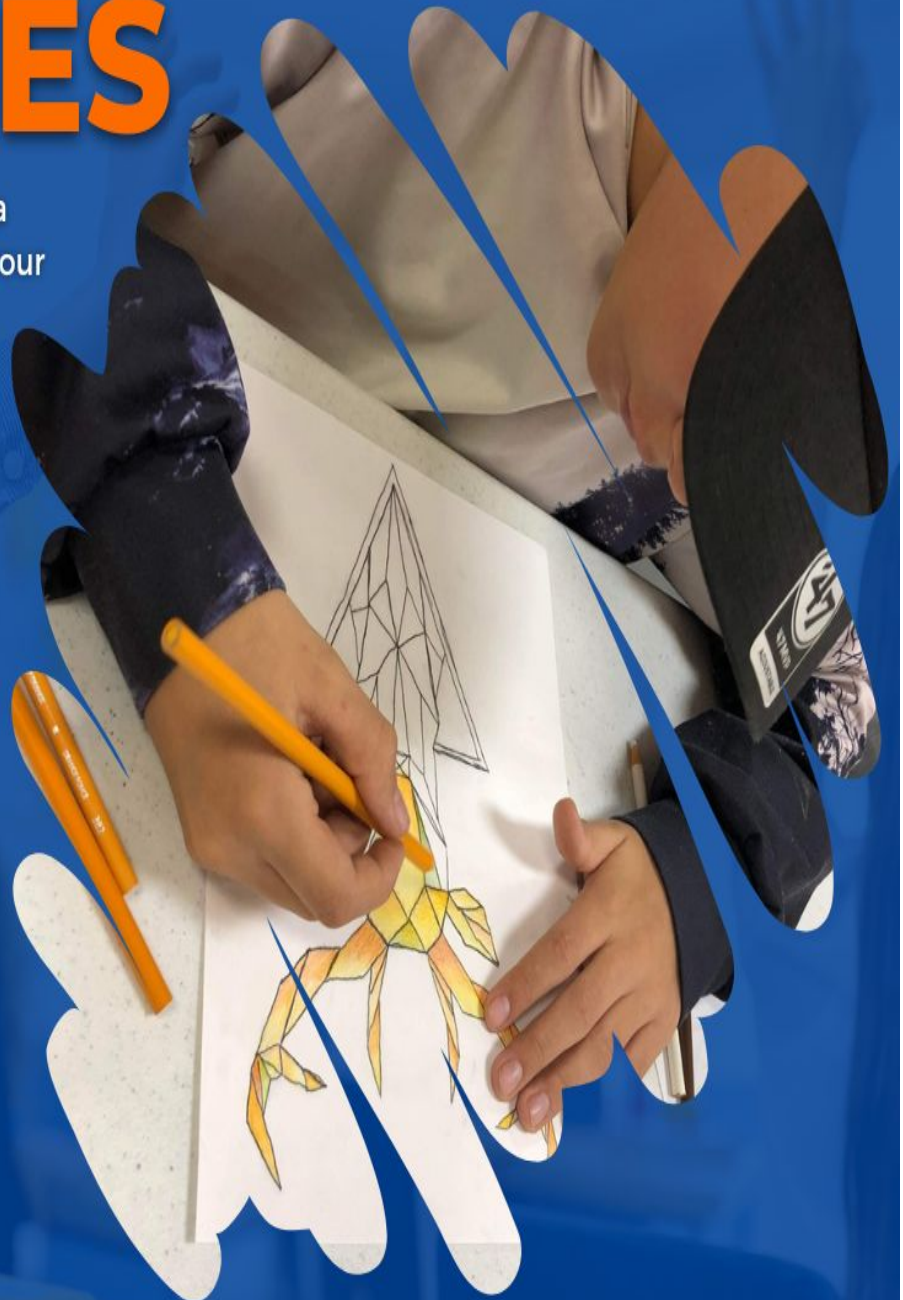
AGES

8 - 14



LOCATION

Bowden Grandview School



KEYSTONE

BOWDEN

YOUTH
HQ

For all youth aged 13-18
Wednesdays 6:00pm-8:00pm
Olde Library Building



WHY JOIN KEYSTONE?

1. HANG OUT WITH FRIENDS
2. HELP PLAN OR JUST JOIN IN
3. KEYSTONE IS TOTALLY FREE

Register Today
Spots are limited

YOUTH HQ.CA
BGC@YOUTH HQ.CA
403-342-6500



Snow Buddies

Will you be a Snow Buddy? We need you and your best shoveling skills to partner with local residents & seniors who need a hand with the winter wonderland!

Do you need a Snow Buddy? We will connect you with local Snow Buddy's who have signed up to lend a hand with the winter wonderland!

Contact Bowden FCSS at 403-224-2207 or email FCSS@Bowden.ca to become a "Snow Buddy", or to find one near you.



Note: FCSS is only a contact for connection. It will be up to the Snow Buddy & resident to decide on cost, frequency and other details.



BEFORE AND AFTER SCHOOL CARE

OPEN FOR REGISTRATION

BGC Olds and Area is excited to partner with Bowden Grandview School to offer before and after school care!

THE DETAILS

BGC Olds and Area has been providing licensed before and after school programs for children in Olds and area for the past 38 years! Our program provides children with a safe place to go in the out of school hours where they can have fun, interact with their peers, and develop skills that will last a lifetime

Before School - \$250

After School - \$310

Full time - \$380

Before and after kindergarten - \$175

Drop in \$20/segment

***Subsidies are available through the Government of Alberta for families with a household income less than \$89,999

REGISTRATION

Contact Ashley

403-598-7663

ashleybgcolds@outlook.com



bgc

Olds & Area